

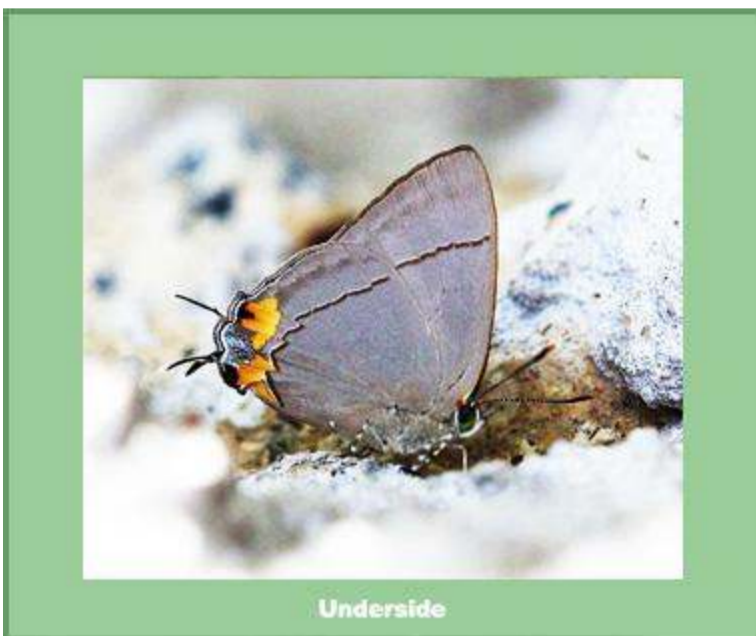
SAMUI BUTTERFLIES

www.samuibutterflies.com
by Les Day

[home](#) [about](#) [contact](#) [insects](#) ▾ [expeditions](#) ▾ [galleries](#) ▾

[Insects](#) >> [Butterflies](#) >> [Lycaenidae](#) >> *Tajuria dominus dominus*

Tajuria dominus dominus



[<< Back to Lycaenidae overview](#)

H. H. Druce 1895 - The Influent Royal

A very rare species on Samui, found for the first time on 14 October 2011.

It is to be found at the edges of woodland, and usually keeps to the tree canopy.

Flight Period

Jan	Feb	Mar	Apr	May	Jun	Jul	Aug	Sep	Oct	Nov	Dec
						x		x	x	x	

Wingspan

26 - 30mm

Early Stages

Not known.

Larval Foodplant

Not known.

Range

Peninsular Thailand and Malaysia.