

SAMUI BUTTERFLIES

www.samuibutterflies.com

by Les Day

[home](#)

[about](#)

[contact](#)

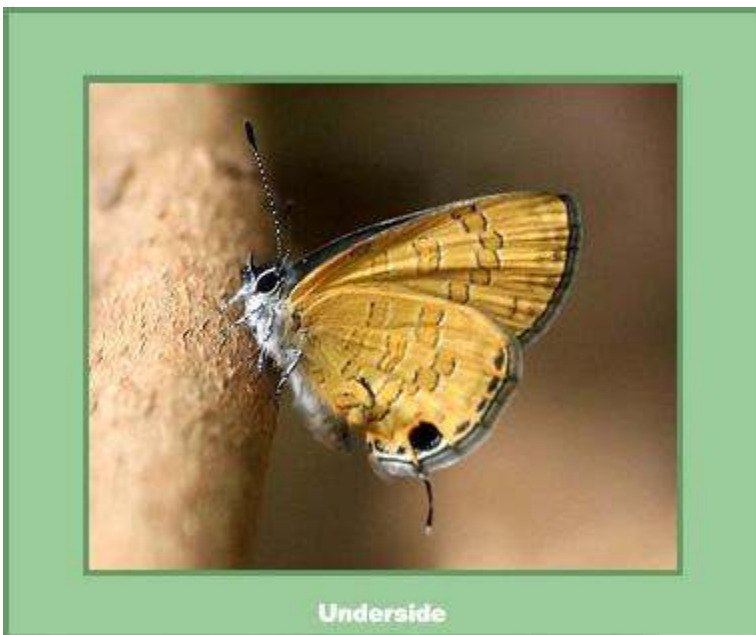
[insects](#) ▼

[expeditions](#) ▼

[galleries](#) ▼

[Insects](#) >> [Butterflies](#) >> [Lycaenidae](#) >> [Prosotas pia marginata](#)

Prosotas pia marginata



[<< Back to Lycaenidae overview](#)

Tite 1963 - Margined Lineblue

This small species can easily be mistaken for the much more common *P. nora*. It is to be found in the same roadside locations, but can be distinguished on the underside for being slightly paler and having the marginal dark spots considerably weaker.

Flight Period

Jan	Feb	Mar	Apr	May	Jun	Jul	Aug	Sep	Oct	Nov	Dec
x			x			x					

Wingspan

19 - 21mm

Early Stages

Not known

Larval Foodplant

Not known

Range

Sikkim, through Myanmar, Peninsular Thailand to Northern Malaysia.