

SAMUI BUTTERFLIES

www.samuibutterflies.com

by Les Day

[home](#)

[about](#)

[contact](#)

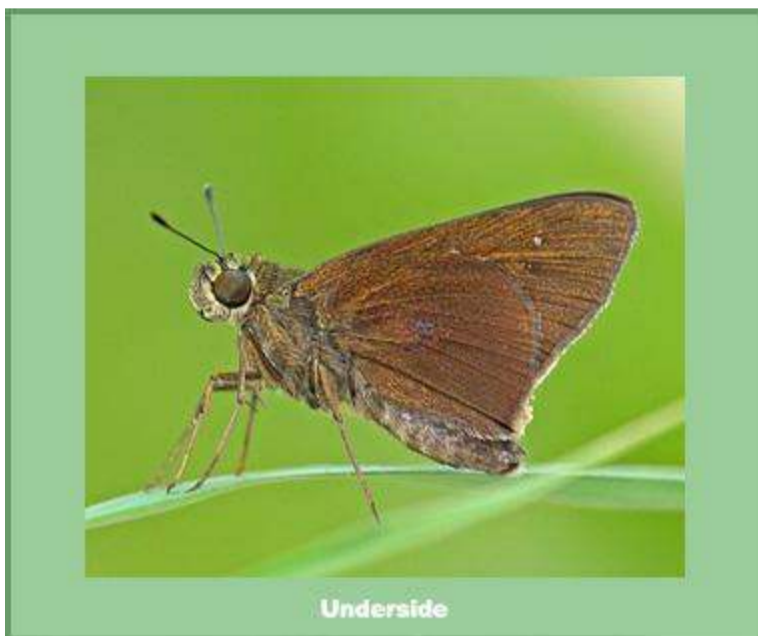
[insects](#) ▼

[expeditions](#) ▼

[galleries](#) ▼

[Insects](#) >> [Butterflies](#) >> [Hesperiidae](#) >> [Baoris farri farri](#)

Baoris farri farri



[<< Back to Hesperiidae overview](#)

Moore 1878 - The Bamboo Paintbrush Swift

A rare species, though it is so similar to other small brown species, that its presence may well be often overlooked.

It appears to be a forest orientated species, found near its bamboo hostplant.

Flight Period

Jan	Feb	Mar	Apr	May	Jun	Jul	Aug	Sep	Oct	Nov	Dec
				x							x

Wingspan

36 - 40mm

Early Stages

Only partially known.

Larval Foodplant

Bambusa nana and *Bambusa* spp. (both Gramineae)

Range

Thailand, India, Myanmar, Vietnam, Malaysia and Southern China. One other subspecies found on the Andaman Islands.