

SAMUI BUTTERFLIES

www.samuibutterflies.com

by Les Day

[home](#)

[about](#)

[contact](#)

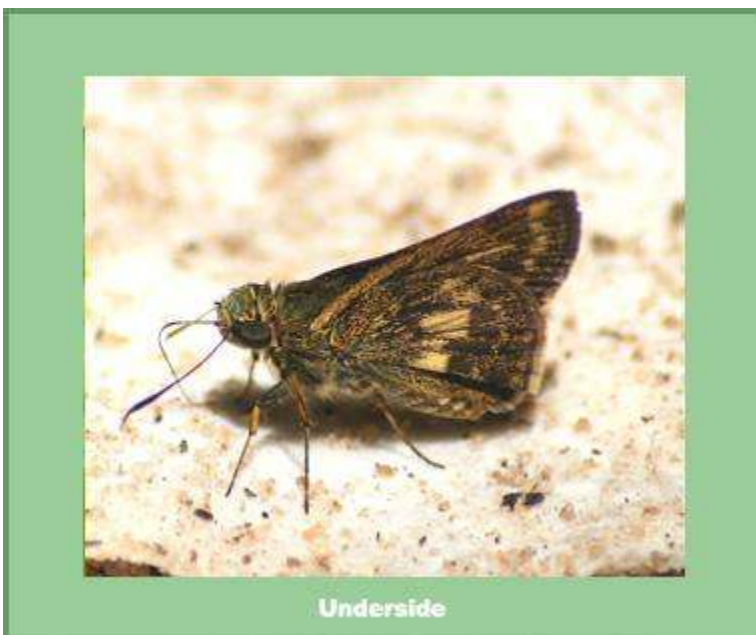
[insects](#) ▼

[expeditions](#) ▼

[galleries](#) ▼

[Insects](#) >> [Butterflies](#) >> [Hesperiidae](#) >> Halpe toxopea

Halpe toxopea



[<< Back to Hesperiidae overview](#)

Evans 1932 - Palawan Ace

A rare species on Samui, seen only twice, both times at the fringe of forests.

Flight Period

Jan	Feb	Mar	Apr	May	Jun	Jul	Aug	Sep	Oct	Nov	Dec
					x						

Wingspan

24 - 28mm.

Early Stages

Not known

Larval Foodplant

Not known

Range

Peninsular Thailand, West Malaysia, Sumatra, Borneo, Java and Palawan.