

SAMUI BUTTERFLIES

www.samuibutterflies.com

by Les Day

[home](#)

[about](#)

[contact](#)

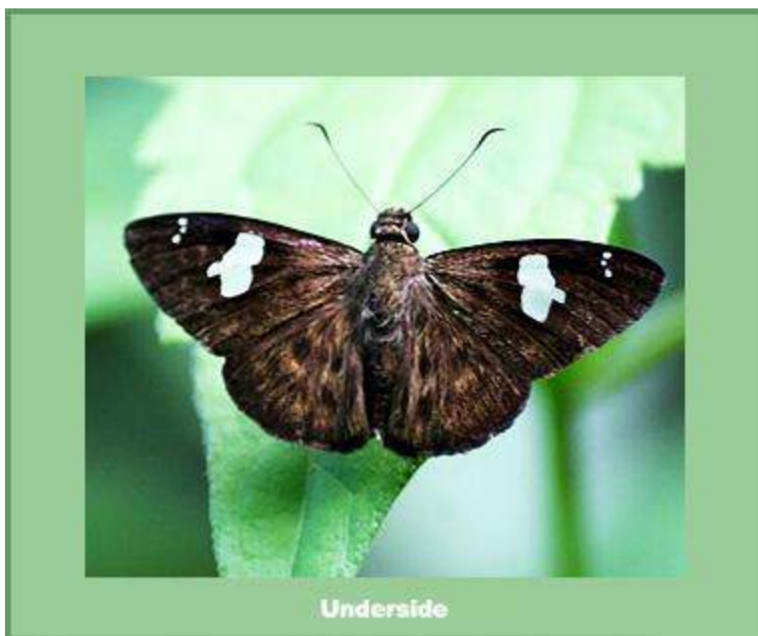
[insects](#) ▼

[expeditions](#) ▼

[galleries](#) ▼

[Insects](#) >> [Butterflies](#) >> [Hesperiidae](#) >> *Celaenorrhinus asmara asmara*

Celaenorrhinus asmara asmara



[<< Back to Hesperiidae overview](#)

Butler 1879 - White Banded Flat

This species is uncommon on Samui. It is to be found in forested areas.

This species flies low to the ground and nearly always rests on the undersides of leaves, wings open.

Flight Period

Jan	Feb	Mar	Apr	May	Jun	Jul	Aug	Sep	Oct	Nov	Dec
X	X	X	X			X		X			X

Wingspan

33 - 38mm

Early Stages

Fully known. Further details available from Life Histories of Asian Butterflies, volume 2, pages 637/8.

Larval Foodplant

Volkameria fragrans (Verbenaceae)

Range

Thailand, N E India, Myanmar and Vietnam. Other subspecies to be found in West Malaysia, Sumatra, Java, Borneo, Palawan and Sulawesi.