

SAMUI BUTTERFLIES

www.samuibutterflies.com

by Les Day

[home](#)

[about](#)

[contact](#)

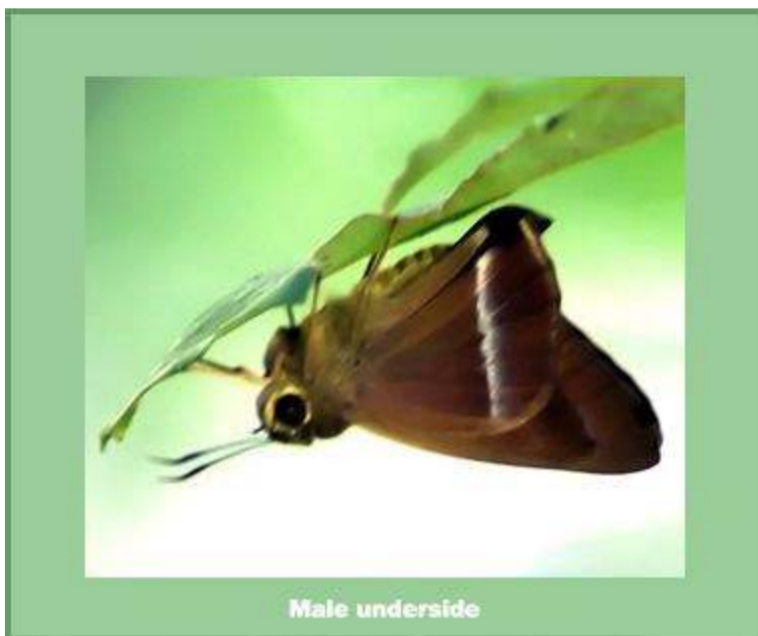
[insects](#) ▼

[expeditions](#) ▼

[galleries](#) ▼

[Insects](#) >> [Butterflies](#) >> [Hesperiidae](#) >> *Hasora chromus chromus*

Hasora chromus chromus



[<< Back to Hesperiidae overview](#)

Cramer 1780 - Common Banded Awl

Moderately rare species on Samui, found in or around forests.

Flight Period

Jan	Feb	Mar	Apr	May	Jun	Jul	Aug	Sep	Oct	Nov	Dec
x				x							

Wingspan

38 - 45mm.

Early Stages

Fully known. More detailed life history information is available from the following resource: [ButterflyCircle Blog](#) (courtesy of Dr. Horace Tan.)

Larval Foodplant

(all Leguminosae), *Rourea (Santaloides) sp.* (Connaraceae), *Heynea taminatus* (Meliaceae) and *Ricinus communis* (Euphorbiaceae)

Range

Sri Lanka, through India, Indo-China all the way to China and Australia. Other subspecies in Taiwan, Riu Kiu Is., Fiji and the New Hebrides.