

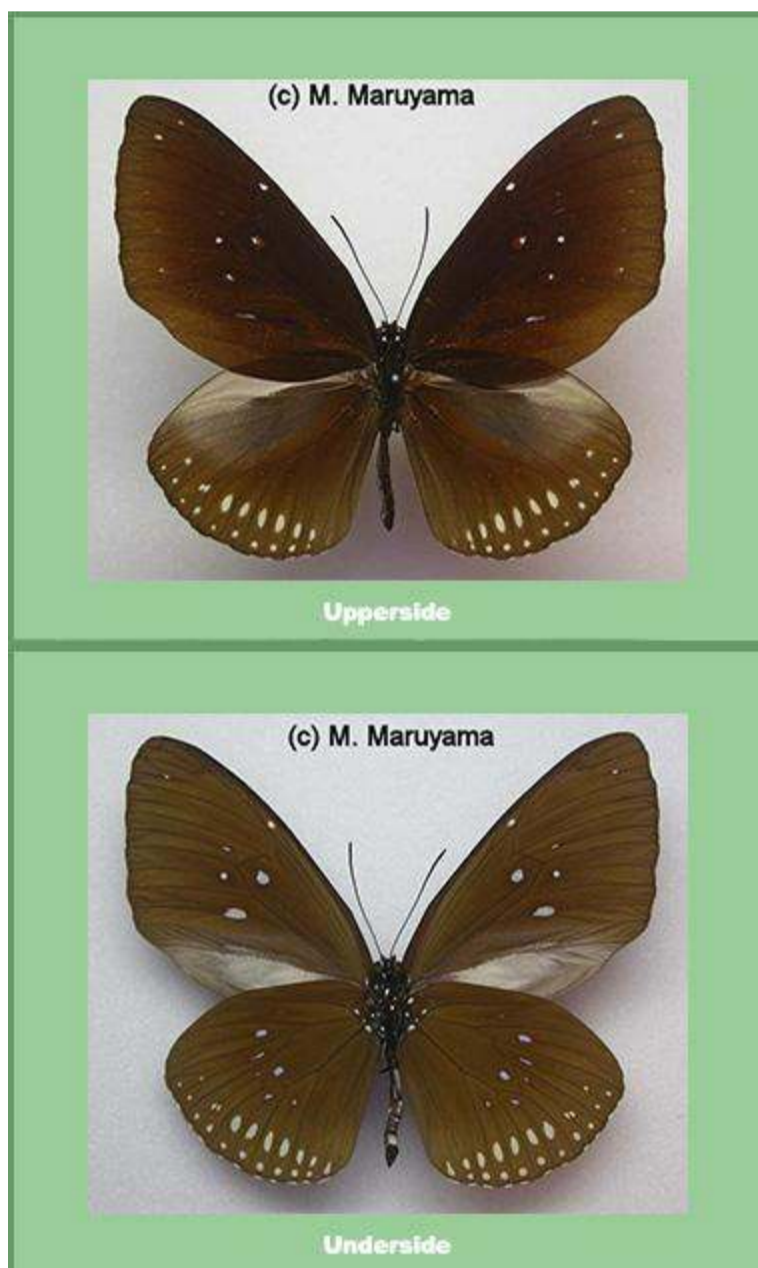
# SAMUI BUTTERFLIES

www.samuibutterflies.com  
by Les Day

[home](#) [about](#) [contact](#) [insects](#) ▾ [expeditions](#) ▾ [galleries](#) ▾

[Insects](#) >> [Butterflies](#) >> [Danainae](#) >> *Euploea modesta modesta*

## *Euploea modesta modesta*



### Butler 1866 - The Plain Blue Crow

Koh Samui only.

A rare species on Samui, found back in February 1988 by M. Maruyama. Not seen since, but its similar appearance to other members of the genus may mean that it has been overlooked.

### Flight Period

Jan	Feb	Mar	Apr	May	Jun	Jul	Aug	Sep	Oct	Nov	Dec
	x										

### Wingspan

65 - 75mm

### Early Stages

Only partially known.

### Larval Foodplant

*Ficus racemosa* (Moraceae)

### Range

Myanmar to Vietnam and the Malay Peninsular. Other subspecies found along the Indonesian archipelago to New Guinea and the Bismarks.

[<< Back to Danainae overview](#)