

SAMUI BUTTERFLIES

www.samuibutterflies.com

by Les Day

[home](#)

[about](#)

[contact](#)

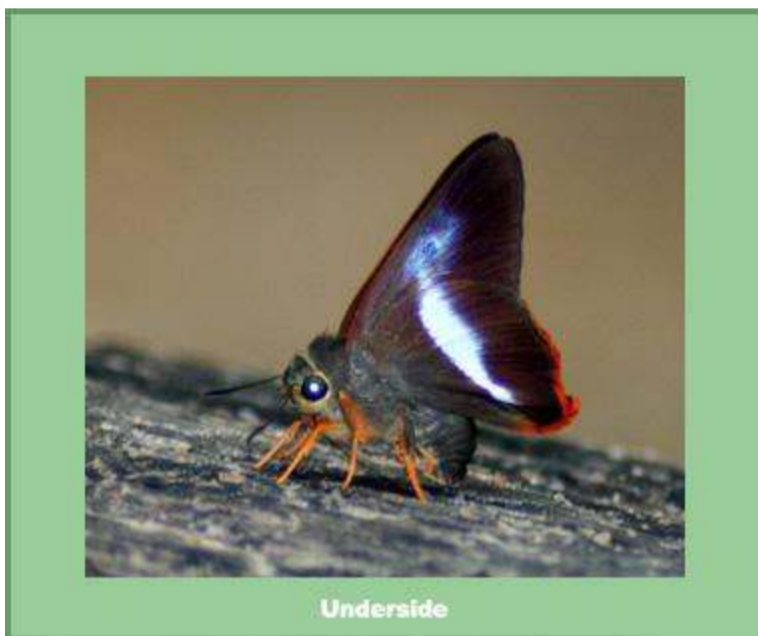
[insects](#) ▼

[expeditions](#) ▼

[galleries](#) ▼

[Insects](#) >> [Butterflies](#) >> [Hesperiidae](#) >> [Bibasis sena uniformis](#)

Bibasis sena uniformis



[<< Back to Hesperiidae overview](#)

Elwes & Edwards 1897 - The Orange-tailed Awl

Surprisingly rare on Samui, only having been positively identified once.

It is to be found in forest environments, most often in the early morning or evening.

Flight Period

Jan	Feb	Mar	Apr	May	Jun	Jul	Aug	Sep	Oct	Nov	Dec
									x		

Wingspan

40 - 50mm

Early Stages

Known. For ruther details, see Life Histories of Asian Butterflies, volume 2, page 628.

Larval Foodplant

Combretum latifolium (Combretaceae)

Range

Peninsular Thailand, Malaysia, S. Myanmar, Sumatra, Java, Borneo and the Lesser Sunda Islands. Other subspecies found in Northern Thailand, Sri Lanka, India, Myanmar, the Andaman Islands and Hainan.